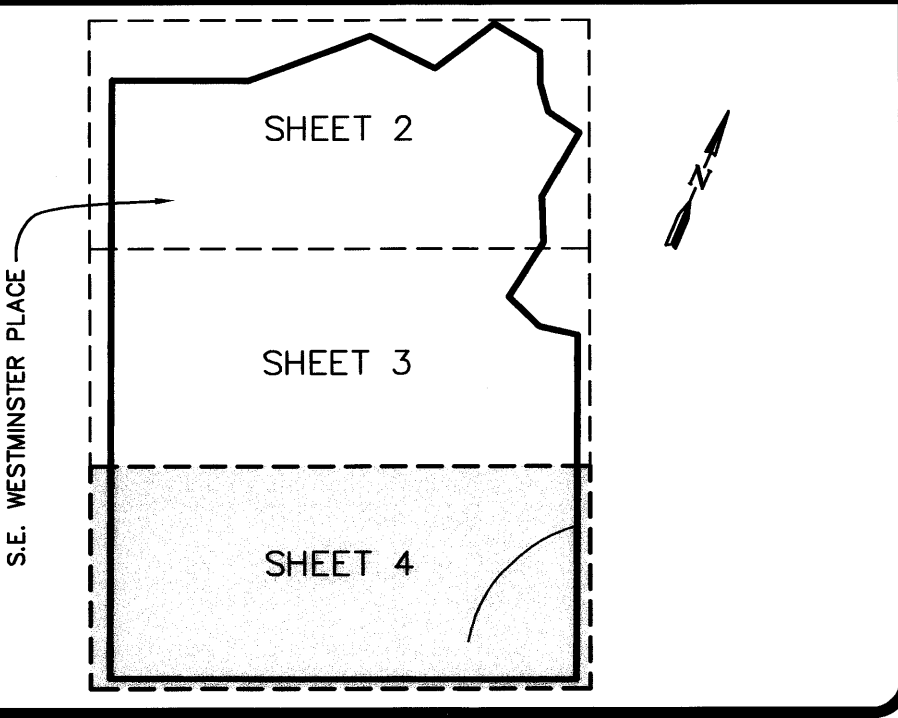
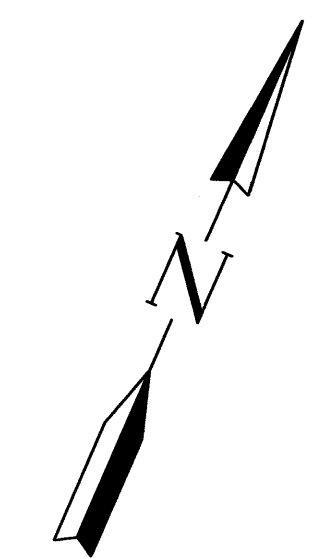
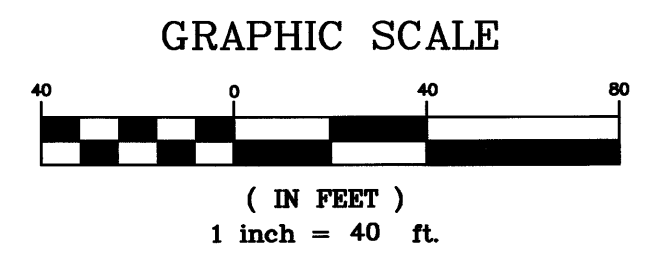


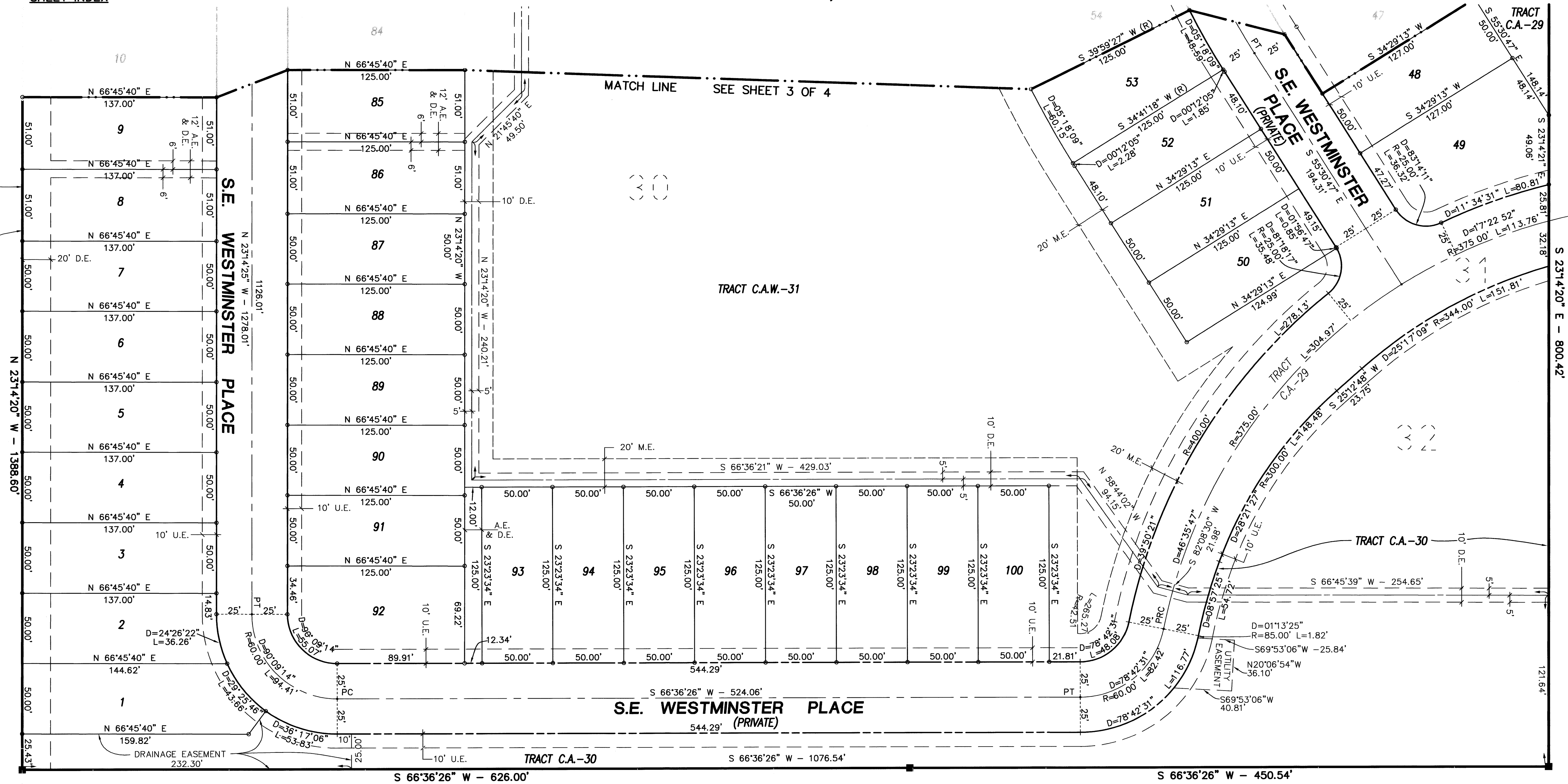
WILLOUGHBY PLAT NO. 17, A P.U.D.(r)

Being a parcel of land lying in the Hanson Grant, Martin County, Florida and being a replat of Willoughby Plat No. 16, a P.U.D. (r) (Willoughby Glen) as recorded in Plat Book 14, Page 84, public records, Martin County, Florida.

November, 2000



SHEET INDEX



POINT OF BEGINNING
NORTHWESTERLY CORNER OF
FISHERMAN'S COVE,
SECTION 2, PHASE 2A

FISHERMAN'S COVE
SECTION 2, PHASE 2A
PLAT BOOK 8, PAGE 20 MARTIN COUNTY, FLORIDA

FISHERMAN'S COVE
SECTION 2, PHASE 2B
PLAT BOOK 8, PAGE 32 MARTIN COUNTY, FLORIDA

106 107 108 109 110 111 112 113 114 115

SURVEYOR'S NOTES

- 1) THIS PLAT, AS RECORDED IN ITS ORIGINAL FORM IN THE PUBLIC RECORDS, IS THE OFFICIAL DEPICTION OF THE SUBDIVIDED LANDS DESCRIBED HEREON AND WILL IN NO CIRCUMSTANCES BE SUPPLANTED IN AUTHORITY BY ANY OTHER FORM OF THE PLAT, WHETHER GRAPHIC OR DIGITAL.
- 2) THERE MAY BE ADDITIONAL RESTRICTIONS THAT ARE NOT RECORDED ON THIS PLAT THAT MAY BE FOUND IN THE PUBLIC RECORDS OF THIS COUNTY.
- 3) THERE SHALL BE NO BUILDING OR ANY OTHER KIND OF CONSTRUCTION, OR PLACEMENT OF TREES OR SHRUBS ON DRAINAGE EASEMENTS.
- 4) BEARINGS SHOWN HEREON ARE REFERENCED TO THE NORTH LINE OF FISHERMAN'S COVE SECTION 2, PHASE 2A, AS RECORDED IN PLAT BOOK 8, PAGE 20, PUBLIC RECORDS, MARTIN COUNTY, FLORIDA. SAID LINE BEARS SOUTH 66°36'26" WEST.
- 5) ACCESS TO WILLOUGHBY PLAT NO. 17, A P.U.D. (r) WILL BE PROVIDED BY SEPARATE INSTRUMENT, AS RECORDED IN OFFICIAL RECORD BOOK 1422, PAGE 697, PUBLIC RECORDS OF MARTIN COUNTY, FLORIDA.

LEGEND

- = SET PERMANENT CONTROL POINT (PCP) PARKER KALON NAIL & WASHER LABELED "GCY LB 4108"
- = SET 3/4" IRON PIPE WITH YELLOW CAP LABELED "GCY, INC. LB 4108"
- = SET PERMANENT REFERENCE MONUMENT (PRM) 4"x4" CONCRETE MONUMENT WITH DISK LABELED "GCY INC. P.R.M. LB 4108, PSM 4864"
- D = DELTA (CENTRAL ANGLE)
- L = ARC LENGTH
- R = RADIUS
- CB = CHORD BEARING
- A.E. = ACCESS EASEMENT (PRIVATE)
- C.A. = COMMON AREA
- C.A.W. = COMMON AREA WATER
- D.E. = DRAINAGE EASEMENT (PRIVATE)
- LB = LICENSED BUSINESS
- M.E. = MAINTENANCE EASEMENT
- P.C. = POINT OF CURVATURE
- P.R.C. = POINT OF REVERSE CURVATURE
- PSM = PROFESSIONAL SURVEYOR AND MAPPER
- P.T. = POINT OF TANGENCY
- P.U.D. = PLANNED UNIT DEVELOPMENT
- (R) = RADIAL LINE
- U.E. = UTILITY EASEMENT

Job Number 99-1019-01-01
Licensed Business #4108

INCORPORATED
PROFESSIONAL SURVEYORS AND MAPPERS
P.O. BOX 1469, PALM CITY, FLORIDA 34991
1505 S.W. MARTIN HWY. • 561-286-8083
CERTIFICATE OF AUTHORIZATION LB 4108